

**CITY OF TEA
ORDINANCE #287**

AN ORDINANCE CREATING ZONING REGULATIONS FOR CANNABIS ESTABLISHMENTS.

WHEREAS, Initiated Measure 26 (IM 26), regarding Medical Cannabis, was passed by South Dakota voters in November 2020; and

WHEREAS, the provisions of IM 26 have been codified under South Dakota Codified Laws (SDCL) Chapter 34-20G; and

WHEREAS, such state statutes explicitly provide local governments with certain regulatory authority over aspects of cannabis establishments, including zoning matters; and

WHEREAS, the City of Tea has the lawful authority to regulate other aspects relating to cannabis establishments by and through its use of existing municipal powers.

BE IT ORDAINED BY THE CITY OF TEA, SOUTH DAKOTA AS FOLLOWS:

SECTION 1. THAT A NEW CHAPTER BE ADDED TO THE TEA ZONING REGULATIONS – TO READ AS FOLLOWS:

CHAPTER 20 – MEDICAL CANNABIS ESTABLISHMENTS

20.01: INTENT:

In order to minimize the negative effects cannabis establishments, have on adjacent land uses, and to promote the public health, safety and general welfare of the City, the City Council adopts the following regulations, recognizing that the City has a great interest in the present and future character of its residential and commercial neighborhoods.

Adoption of these regulations is not intended to unreasonably restrict the opportunity of cannabis establishments to locate in the city but rather to ensure cannabis establishments are not located in areas contrary to public interest, injurious to nearby properties, nor concentrated in one area of the City.

20.02: DEFINITIONS:

Unless an alternative definition is explicitly stated in this section, this chapter utilizes the definitions for cannabis related terms which are defined by SDCL 34-20G-1.

BLIGHTED AREA: an area characterized by traits such as dilapidation, overcrowding, deterioration, dangerous structures, unsanitary, inadequate infrastructure, nuisance, or other factors which inhibit the growth and development of an area.

CANNABIS (or MARIJUANA): all parts of any plant of the genus cannabis, whether growing or not, in its natural and unaltered state, except for drying or curing and crushing or crumbling. The term includes an altered state of marijuana absorbed into the human body. The term does not include fiber produced from the mature stalks of such plant, or oil or cake made from the seeds of such plant. The term does not include the plant *Cannabis sativa* L. and any part of that plant, including the seeds thereof and all derivatives, extracts, cannabinoids, isomers, acids, salts, and salts of isomers, whether growing or not, with a delta-9 tetrahydrocannabinol concentration of not more than three-tenths of one percent on a dry weight basis.

CANNABIS CULTIVATION FACILITY: a legally licensed entity that acquires, possesses, cultivates, delivers, transfers, transports, supplies, or sells cannabis and related supplies to a cannabis establishment.

CANNABIS DISPENSARY: a legally licensed entity that acquires, possesses, stores, delivers, transfers, transports, sells, supplies, or dispenses cannabis, cannabis products, paraphernalia, or related supplies and educational materials.

CANNABIS PRODUCT MANUFACTURING FACILITY: a legally licensed entity that acquires, possesses, manufactures, delivers, transfers, transports, supplies, or sells cannabis products to a cannabis dispensary.

CANNABIS TESTING FACILITY: a legally licensed entity legally authorized to analyze the safety and potency of cannabis.

CANNABIS ESTABLISHMENT: a cannabis cultivation facility, a cannabis testing facility, a cannabis product manufacturing facility, or a cannabis dispensary.

MENTAL HEALTH FACILITY: an entity engaged in diagnosing, treating, caring for, or counseling people requiring mental health services, including substance abuse disorders, but which does not regularly provide other types of personal health services.

NON-LICENSED CANNABIS ESTABLISHMENT: an entity which would otherwise meet the definition of a cannabis establishment, but which is not legally licensed.

20.03: REGULATIONS RELATING TO CANNABIS CULTIVATION FACILITIES:

No cannabis cultivation facility shall be owned or operated at a location within the city's zoning jurisdiction.

20.04: REGULATIONS RELATING TO CANNABIS TESTING FACILITIES:

No cannabis testing facility shall be owned or operated at a location within the city's zoning jurisdiction.

20.05: REGULATIONS RELATING TO CANNABIS PRODUCT MANUFACTURING FACILITIES:

No cannabis product manufacturing facility shall be owned or operated at a location within the city's zoning jurisdiction.

20.06: REGULATIONS RELATING TO CANNABIS DISPENSARIES:

- a) No cannabis dispensary shall be owned or operated at a location within the city's zoning jurisdiction except as provided by this section. A cannabis dispensary shall be considered a conditional use in the following districts: GB General Business Commercial District and LI Light Industrial District.
- b) No cannabis dispensary shall operate within one thousand feet (1000) of an educational institution, including a preschool, elementary, intermediate, middle or high school, and five hundred feet (500) from a religious institution, childcare center (excluding family residential childcare), nursery, or mental health facility. Distances shall be measured from the closest point of the property lines but excluding public rights of way. Such buffer distance requirements may be waived via the variance process so long as the zoning district for the proposed location would be allowed if the applicable buffer distance requirement were waived.

20.07: ADDITIONAL VARIANCE AND CONDITIONAL USE FACTORS FOR CANNABIS ESTABLISHMENTS:

In addition to any other factor which may be properly considered in the grant or denial of a variance or conditional use permit, the following factors shall be relevant for variance and conditional use requests relating to cannabis establishments:

- a) That the proposed land use is consistent with the intent of this chapter and will not be contrary to public interest or injurious to nearby properties.
- b) That the proposed land use will not cause or contribute to the formation or expansion of blighted area.
- c) That all applicable ordinances and regulations will be observed.

20.08: PROHIBITED DISTRICTS FOR CANNABIS ESTABLISHMENTS:

- a) All types of cannabis establishments are prohibited in the following districts: all R Residential Districts, NRC Natural Resource Conservation District and Rural Service Development District.
- b) All non-licensed cannabis establishments are prohibited in all zoning districts.”

SECTION 2.

All ordinances and parts of ordinances in conflict herewith are hereby repealed.

SECTION 3.

The City Finance Officer shall cause notice of adoption of this ordinance to be published in the official newspaper and twenty (20) days after the completed publication, unless the referendum is invoked, this ordinance shall become effective.

Adopted by majority vote of the Tea SD City Council in regular session this 18th day of October , 2021.

John Lawler – Mayor

Attest: Dawn Murphy – City Finance Officer

(SEAL)

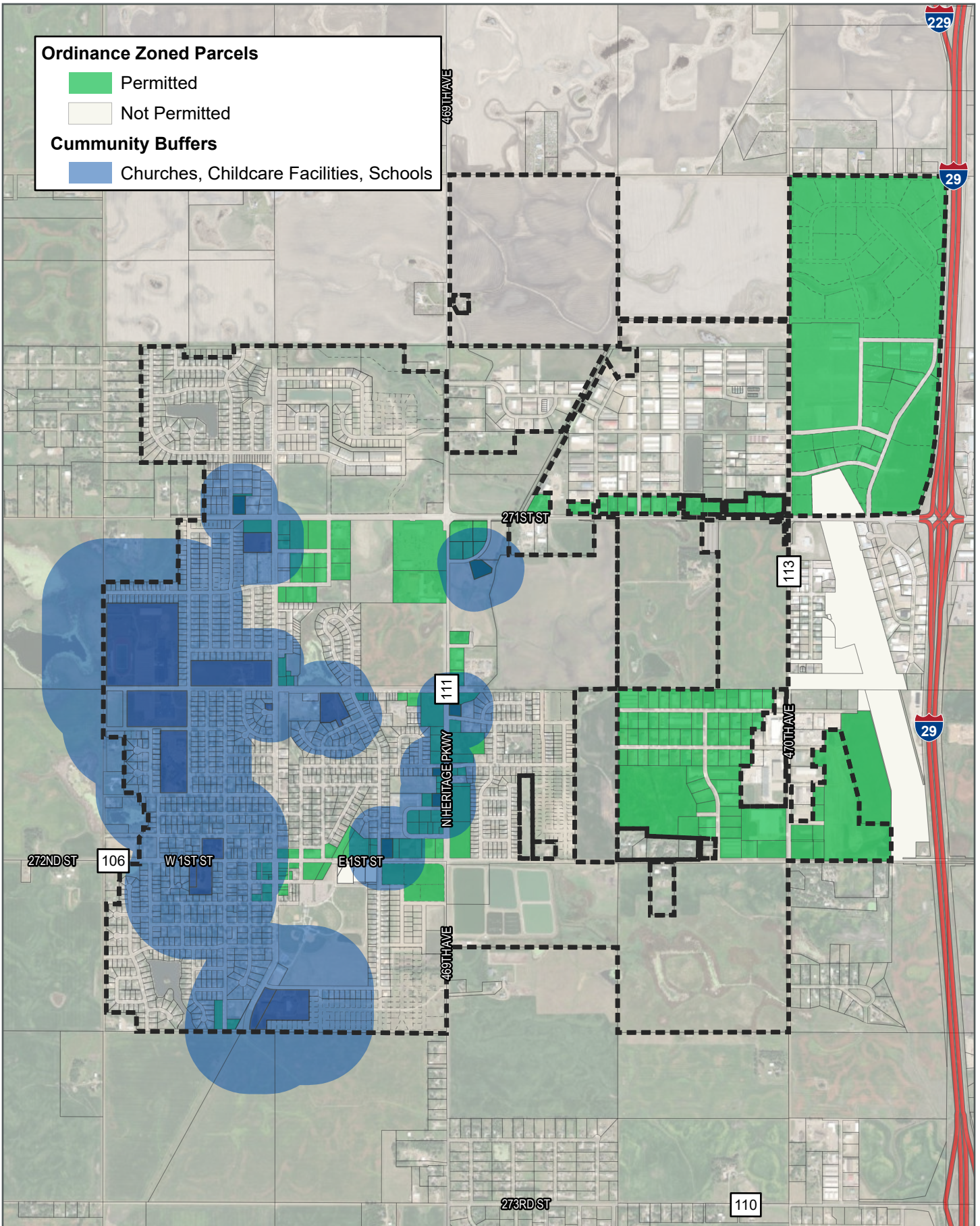
First Reading: October 4, 2021
Second Reading: October 18, 2021
Published: November 5, 2021
Effective: November 25, 2021

Ordinance Zoned Parcels

- Permitted
- Not Permitted

Community Buffers

- Churches, Childcare Facilities, Schools



CITY OF TEA

Medical Cannabis Dispensary Location Map